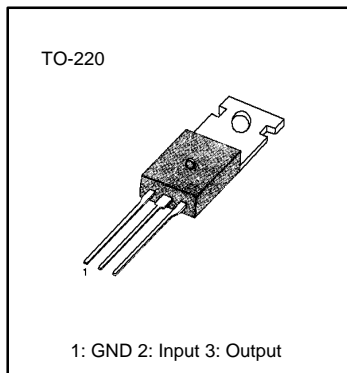


LM79XX/A (KA79XX, MC79XX) FIXED VOLTAGE REGULATOR (NEGATIVE)

3-TERMINAL 1A NEGATIVE VOLTAGE REGULATORS

The LM79XX series of three-terminal negative regulators are available in TO-220 package and with several fixed output voltages, making them useful in a wide range of applications. Each type employs internal current limiting, thermal shut-down and safe area protection, making it essentially indestructible.



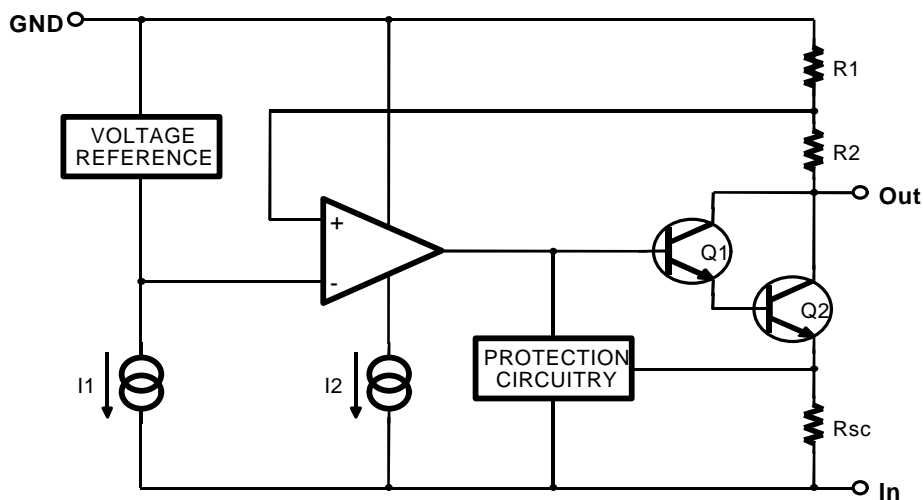
FEATURES

- Output Current in Excess of 1A
- Output Voltages of -5, -6, -8, -12, -15, -18, -24V
- Internal Thermal Overload Protection
- Short Circuit Protection
- Output Transistor Safe-Area Compensation

ORDERING INFORMATION

Device	Output Voltage Tolerance	Package	Operating Temperature
LM79XXCT	± 4%	TO-220	0 ~ +125 °C
LM79XXAT	± 2%		

BLOCK DIAGRAM



LM79XX/A (KA79XX, MC79XX) FIXED VOLTAGE REGULATOR (NEGATIVE)

ABSOLUTE MAXIMUM RATINGS (T_A=+25°C, unless otherwise specified)

Characteristic	Symbol	Value	Unit
Input Voltage	V _I	-35	V
Thermal Resistance Junction-Cases	R _{θJC}	5	°C / W
Junction-Air	R _{θJA}	65	°C / W
Operating Temperature Range	T _{OPR}	0 ~ +125	°C
Storage Temperature Range	T _{STG}	- 65 ~ +150	°C

LM7905 ELECTRICAL CHARACTERISTICS

(V_I = 10V, I_O = 500mA, 0°C ≤ T_J ≤ +125°C, C_I = 2.2μF, C_O = 1μF, unless otherwise specified.)

Characteristic	Symbol	Test Conditions	Min	Typ	Max	Unit
Output Voltage	V _O	T _J = +25°C	- 4.8	- 5.0	- 5.2	V
		I _O = 5mA to 1A, P _O = 15W V _I = -7 to -20V	- 4.75	- 5.0	- 5.25	
Line Regulation	ΔV _O	T _J = 25°C		5	50	mV
		V _I = -7 to -20V I _O = 1A		2	25	
		V _I = -8 to -12V I _O = 1A		7	50	
		V _I = -7.5 to -25V		7	50	
Load Regulation	ΔV _O	I _O = 5mA to 1.5A		10	100	mV
		T _J = +25°C I _O = 250 to 750mA		3	50	
Quiescent Current	I _Q	T _J = +25°C		3	6	mA
Quiescent Current Change	ΔI _Q	I _O = 5mA to 1A		0.05	0.5	mA
		V _I = -8 to -25V		0.1	0.8	
Temperature Coefficient of V _O	ΔV _O /ΔT	I _O = 5mA		- 0.4		mV/°C
Output Noise Voltage	V _N	f = 10Hz to 100KHz T _A = +25°C		40		μV
Ripple Rejection	RR	f = 120Hz, I _O = -35V ΔV _I = 10V	54	60		dB
Dropout Voltage	V _D	T _J = +25°C I _O = 1A		2		V
Short Circuit Current	I _{SC}	T _J = +25°C, V _I = -35V		300		mA
Peak Current	I _{PK}	T _J = +25°C		2.2		A

* Load and line regulation are specified at constant junction temperature. Changes in V_O due to heating effects must be taken into account separately. Pulse testing with low duty is used.

LM79XX/A (KA79XX, MC79XX) FIXED VOLTAGE REGULATOR (NEGATIVE)

LM7906 ELECTRICAL CHARACTERISTICS

($V_I = 11V$, $I_O = 500mA$, $0^\circ C \leq T_J \leq +125^\circ C$, $C_I = 2.2\mu F$, $C_O = 1\mu F$, unless otherwise specified.)

Characteristic	Symbol	Test Conditions	Min	Typ	Max	Unit
Output Voltage	V_O	$T_J = +25^\circ C$	- 5.75	- 6	- 6.25	V
		$I_O = 5mA$ to 1A, $P_O = 15W$ $V_I = -9$ to - 21V	- 5.7	- 6	- 6.3	
Line Regulation	ΔV_O	$T_J = 25^\circ C$	$V_I = -8$ to - 25V	10	120	mV
			$V_I = -9$ to -12V	5	60	
Load Regulation	ΔV_O	$T_J = +25^\circ C$ $I_O = 5mA$ to 1.5A		10	120	mV
		$T_J = +25^\circ C$ $I_O = 250$ to 750mA		3	60	
Quiescent Current	I_Q	$T_J = +25^\circ C$		3	6	mA
Quiescent Current Change	ΔI_Q	$I_O = 5mA$ to 1A			0.5	mA
		$V_I = -9$ to -25V			1.3	
Temperature Coefficient of V_O	$\Delta V_O/\Delta T$	$I_O = 5mA$		-0.5		mV/ $^\circ C$
Output Noise Voltage	V_N	$f = 10Hz$ to 100KHz $T_A = +25^\circ C$		130		μV
Ripple Rejection	RR	$f = 120Hz$ $\Delta V_I = 10V$	54	60		dB
Dropout Voltage	V_D	$T_J = +25^\circ C$ $I_O = 1A$		2		V
Short Circuit Current	I_{SC}	$T_J = +25^\circ C$, $V_I = -35V$		300		mA
Peak Current	I_{PK}	$T_J = +25^\circ C$		2.2		A

* Load and line regulation are specified at constant junction temperature. Changes in V_O due to heating effects must be taken into account separately. Pulse testing with low duty is used.

LM79XX/A (KA79XX, MC79XX) FIXED VOLTAGE REGULATOR (NEGATIVE)

LM7908 ELECTRICAL CHARACTERISTICS

($V_I = 14V$, $I_O = 500mA$, $0^\circ C \leq T_J \leq +125^\circ C$, $C_I = 2.2\mu F$, $C_O = 1\mu F$, unless otherwise specified.)

Characteristic	Symbol	Test Conditions	Min	Typ	Max	Unit
Output Voltage	V_O	$T_J = +25^\circ C$	-7.7	-8	-8.3	V
		$I_O = 5mA$ to $1A$, $P_O = 15W$ $V_I = -1.5$ to $-23V$	-7.6	-8	-8.4	
Line Regulation	ΔV_O	$T_J = 25^\circ C$		10	100	mV
		$V_I = -10.5$ to $-25V$ $V_I = -11$ to $-17V$		5	80	
Load Regulation	ΔV_O	$T_J = +25^\circ C$ $I_O = 5mA$ to $1.5A$		12	160	mV
		$T_J = +25^\circ C$ $I_O = 250$ to $750mA$		4	80	
Quiescent Current	I_Q	$T_J = +25^\circ C$		3	6	mA
Quiescent Current Change	ΔI_Q	$I_O = 5mA$ to $1A$		0.05	0.5	mA
		$V_I = -11.5$ to $-25V$		0.1	1	
Temperature Coefficient of V_O	$\Delta V_O/\Delta T$	$I_O = 5mA$		-0.6		mV/ $^\circ C$
Output Noise Voltage	V_N	$f = 10Hz$ to $100KHz$ $T_A = +25^\circ C$		175		μV
Ripple Rejection	RR	$f = 120Hz$ $\Delta V_I = 10V$	54	60		dB
Dropout Voltage	V_D	$T_J = +25^\circ C$ $I_O = 1A$		2		V
Short Circuit Current	I_{SC}	$T_J = +25^\circ C$, $V_I = -35V$		300		mA
Peak Current	I_{PK}	$T_J = +25^\circ C$		2.2		A

* Load and line regulation are specified at constant junction temperature. Changes in V_O due to heating effects must be taken into account separately. Pulse testing with low duty is used.

LM79XX/A (KA79XX, MC79XX) FIXED VOLTAGE REGULATOR (NEGATIVE)

LM7909 ELECTRICAL CHARACTERISTICS

($V_I = 14V$, $I_O = 500mA$, $0^\circ C \leq T_J \leq +125^\circ C$, $C_I = 2.2\mu F$, $C_O = 1\mu F$, unless otherwise specified)

Characteristic	Symbol	Test Conditions	Min	Typ	Max	Unit
Output Voltage	V_O	$T_J = +25^\circ C$	- 8.7	- 9.0	- 9.3	V
		$I_O = 5mA$ to $1A$, $P_O = 15W$ $V_I = -1.5$ to $-23V$	- 8.6	- 9.0	- 9.4	
Line Regulation	ΔV_O	$T_J = 25^\circ C$		10	180	mV
		$V_I = -10.5$ to $-25V$ $V_I = -11$ to $-17V$		5	90	
Load Regulation	ΔV_O	$T_J = +25^\circ C$ $I_O = 5mA$ to $1.5A$		12	180	mV
		$T_J = +25^\circ C$ $I_O = 250$ to $750mA$		4	90	
Quiescent Current	I_Q	$T_J = +25^\circ C$		3	6	mA
Quiescent Current Change	ΔI_Q	$I_O = 5mA$ to $1A$		0.05	0.5	mA
		$V_I = -11.5$ to $-25V$		0.1	1	
Temperature Coefficient of V_O	$\Delta V_O/\Delta T$	$I_O = 5mA$		-0.6		mV/ $^\circ C$
Output Noise Voltage	V_N	$f = 10Hz$ to $100KHz$ $T_A = +25^\circ C$		175		μV
Ripple Rejection	RR	$f = 120Hz$ $\Delta V_I = 10V$	54	60		dB
Dropout Voltage	V_D	$T_J = +25^\circ C$ $I_O = 1A$		2		V
Short Circuit Current	I_{SC}	$T_J = +25^\circ C$, $V_I = -35V$		300		mA
Peak Current	I_{PK}	$T_J = +25^\circ C$		2.2		A

* Load and line regulation are specified at constant junction temperature. Changes in V_O due to heating effects must be taken into account separately. Pulse testing with low duty is used.

LM79XX/A (KA79XX, MC79XX) FIXED VOLTAGE REGULATOR (NEGATIVE)

LM7912 ELECTRICAL CHARACTERISTICS

($V_I = 18V$, $I_O = 500mA$, $0^\circ C \leq T_J \leq +125^\circ C$, $C_I = 2.2\mu F$, $C_O = 1\mu F$, unless otherwise specified.)

Characteristic	Symbol	Test Conditions	Min	Typ	Max	Unit	
Output Voltage	V_O	$T_J = +25^\circ C$	-11.5	-12	-12.5	V	
		$I_O = 5mA$ to $1A$, $P_O = 15W$ $V_I = -15.5$ to $-27V$	-11.4	-12	-12.6		
Line Regulation	ΔV_O	$T_J = 25^\circ C$	$V_I = -14.5$ to $-30V$		12	240	mV
			$V_I = -16$ to $-22V$		6	120	
Load Regulation	ΔV_O	$T_J = +25^\circ C$ $I_O = 5mA$ to $1.5A$		12	240	mV	
		$T_J = +25^\circ C$ $I_O = 250$ to $750mA$		4	120		
Quiescent Current	I_Q	$T_J = +25^\circ C$		3	6	mA	
Quiescent Current Change	ΔI_Q	$I_O = 5mA$ to $1A$		0.05	0.5	mA	
		$V_I = -15$ to $-30V$		0.1	1		
Temperature Coefficient of V_O	$\Delta V_O/\Delta T$	$I_O = 5mA$		-0.8		mV/ $^\circ C$	
Output Noise Voltage	V_N	$f = 10Hz$ to $100KHz$ $T_A = +25^\circ C$		200		μV	
Ripple Rejection	RR	$f = 120Hz$ $\Delta V_I = 10V$	54	60		dB	
Dropout Voltage	V_D	$T_J = +25^\circ C$ $I_O = 1A$		2		V	
Short Circuit Current	I_{SC}	$T_J = +25^\circ C$, $V_I = -35V$		300		mA	
Peak Current	I_{PK}	$T_J = +25^\circ C$		2.2		A	

* Load and line regulation are specified at constant junction temperature. Changes in V_O due to heating effects must be taken into account separately. Pulse testing with low duty is used.

LM79XX/A (KA79XX, MC79XX) FIXED VOLTAGE REGULATOR (NEGATIVE)

LM7915 ELECTRICAL CHARACTERISTICS

($V_I = 23V$, $I_O = 500mA$, $0^\circ C \leq T_J \leq +125^\circ C$, $C_I = 2.2\mu F$, $C_O = 1\mu F$, unless otherwise specified.)

Characteristic	Symbol	Test Conditions	Min	Typ	Max	Unit
Output Voltage	V_O	$T_J = +25^\circ C$	-14.4	-15	-15.6	V
		$I_O = 5mA$ to $1A$, $P_O = 15W$ $V_I = -18$ to $-30V$	-14.25	-15	-15.75	
Line Regulation	ΔV_O	$T_J = 25^\circ C$	$V_I = -17.5$ to $-30V$	12	300	mV
			$V_I = -20$ to $-26V$	6	150	
Load Regulation	ΔV_O	$T_J = +25^\circ C$ $I_O = 5mA$ to $1.5A$		12	300	mV
		$T_J = +25^\circ C$ $I_O = 250$ to $750mA$		4	150	
Quiescent Current	I_Q	$T_J = +25^\circ C$		3	6	mA
Quiescent Current Change	ΔI_Q	$I_O = 5mA$ to $1A$		0.05	0.5	mA
		$V_I = -18.5$ to $-30V$		0.1	1	
Temperature Coefficient of V_O	$\Delta V_O/\Delta T$	$I_O = 5mA$		-0.9		mV/ $^\circ C$
Output Noise Voltage	V_N	$f = 10Hz$ to $100KHz$ $T_A = +25^\circ C$		250		μV
Ripple Rejection	RR	$f = 120Hz$ $\Delta V_I = 10V$	54	60		dB
Dropout Voltage	V_D	$T_J = +25^\circ C$ $I_O = 1A$		2		V
Short Circuit Current	I_{SC}	$T_J = +25^\circ C$, $V_I = -35V$		300		mA
Peak Current	I_{PK}	$T_J = +25^\circ C$		2.2		A

* Load and line regulation are specified at constant junction temperature. Changes in V_O due to heating effects must be taken into account separately. Pulse testing with low duty is used.

LM79XX/A (KA79XX, MC79XX) FIXED VOLTAGE REGULATOR (NEGATIVE)

LM7918 ELECTRICAL CHARACTERISTICS

($V_I = 27V$, $I_O = 500mA$, $0^\circ C \leq T_J \leq +125^\circ C$, $C_I = 2.2\mu F$, $C_O = 1\mu F$, unless otherwise specified.)

Characteristic	Symbol	Test Conditions	Min	Typ	Max	Unit
Output Voltage	V_O	$T_J = +25^\circ C$	-17.3	-18	-18.7	V
		$I_O = 5mA$ to 1A, $P_O = 15W$ $V_I = -22.5$ to $-33V$	-17.1	-18	-18.9	
Line Regulation	ΔV_O	$T_J = 25^\circ C$	$V_I = -21$ to $-33V$	15	360	mV
			$V_I = -24$ to $-30V$	8	180	
Load Regulation	ΔV_O	$T_J = +25^\circ C$ $I_O = 5mA$ to 1.5A		15	360	mV
		$T_J = +25^\circ C$ $I_O = 250$ to 750mA		5	180	
Quiescent Current	I_Q	$T_J = +25^\circ C$		3	6	mA
Quiescent Current Change	ΔI_Q	$I_O = 5mA$ to 1A			0.5	mA
		$V_I = -22$ to $-33V$			1	
Temperature Coefficient of V_O	$\Delta V_O/\Delta T$	$I_O = 5mA$		-1		mV/ $^\circ C$
Output Noise Voltage	V_N	$f = 10Hz$ to 100KHz $T_A = +25^\circ C$		300		μV
Ripple Rejection	RR	$f = 120Hz$ $\Delta V_I = 10V$	54	60		dB
Dropout Voltage	V_D	$T_J = +25^\circ C$ $I_O = 1A$		2		V
Short Circuit Current	I_{SC}	$T_J = +25^\circ C$, $V_I = -35V$		300		mA
Peak Current	I_{PK}	$T_J = +25^\circ C$		2.2		A

* Load and line regulation are specified at constant junction temperature. Changes in V_O due to heating effects must be taken into account separately. Pulse testing with low duty is used.

LM79XX/A (KA79XX, MC79XX) FIXED VOLTAGE REGULATOR (NEGATIVE)

LM7924 ELECTRICAL CHARACTERISTICS

($V_I = 33V$, $I_O = 500mA$, $0^\circ C \leq T_J \leq +125^\circ C$, $C_I = 2.2\mu F$, $C_O = 1\mu F$, unless otherwise specified.)

Characteristic	Symbol	Test Conditions	Min	Typ	Max	Unit	
Output Voltage	V_O	$T_J = +25^\circ C$	- 23	- 24	- 25	V	
		$I_O = 5mA$ to 1A, $P_O \leq 15W$ $V_I = -27$ to $-38V$	- 22.8	- 24	- 25.2		
Line Regulation	ΔV_O	$T_J = 25^\circ C$	$V_I = -27$ to $-38V$		15	480	mV
			$V_I = -30$ to $-36V$		8	180	
Load Regulation	ΔV_O	$T_J = +25^\circ C$ $I_O = 5mA$ to 1.5A		15	480	mV	
			$T_J = +25^\circ C$ $I_O = 250$ to 750mA		5		240
Quiescent Current	I_Q	$T_J = +25^\circ C$		3	6	mA	
Quiescent Current Change	ΔI_Q	$I_O = 5mA$ to 1A $V_I = -27$ to $-38V$			0.5	mA	
					1		
Temperature Coefficient of V_O	$\Delta V_O / \Delta T$	$I_O = 5mA$		-1		mV/ $^\circ C$	
Output Noise Voltage	V_N	$f = 10Hz$ to 100KHz $T_A = +25^\circ C$		400		μV	
Ripple Rejection	RR	$f = 120Hz$ $\Delta V_I = 10V$	54	60		dB	
Dropout Voltage	V_D	$T_J = +25^\circ C$ $I_O = 1A$		2		V	
Short Circuit Current	I_{SC}	$T_J = +25^\circ C$, $V_I = -35V$		300		mA	
Peak Current	I_{PK}	$T_J = +25^\circ C$		2.2		A	

* Load and line regulation are specified at constant junction temperature. Changes in V_O due to heating effects must be taken into account separately. Pulse testing with low duty is used.

LM79XX/A (KA79XX, MC79XX) FIXED VOLTAGE REGULATOR (NEGATIVE)

LM7905A ELECTRICAL CHARACTERISTICS

($V_I = 10V$, $I_O = 500mA$, $0^\circ C \leq T_J \leq +125^\circ C$, $C_I = 2.2\mu F$, $C_O = 1\mu F$, unless otherwise specified.)

Characteristic	Symbol	Test Conditions	Min	Typ	Max	Unit
Output Voltage	V_O	$T_J = +25^\circ C$	- 4.9	- 5.0	- 5.1	V
		$I_O = 5mA$ to 1A, $P_O = 15W$ $V_I = -7$ to -20V	- 4.8	-5.0	- 5.2	
Line Regulation	ΔV_O	$T_J = +25^\circ C$ $V_I = -7$ to -20V $I_O = 1A$		5	50	mV
		$V_I = -8$ to -12V $I_O = 1A$		2	25	
		$V_I = -7.5$ to -25V		7	50	
		$V_I = -8$ to -12V $I_O = 1A$		7	50	
Load Regulation	ΔV_O	$I_O = 5mA$ to 1.5A		10	100	mV
		$T_J = +25^\circ C$ $I_O = 250$ to 750mA		3	50	
Quiescent Current	I_Q	$T_J = +25^\circ C$		3	6	mA
Quiescent Current Change	ΔI_Q	$I_O = 5mA$ to 1A		0.05	0.5	mA
		$V_I = -8$ to -25V		0.1	0.8	
Temperature Coefficient of V_D	$\Delta V_O / \Delta T$	$I_O = 5mA$		- 0.4		mV/ $^\circ C$
Output Noise Voltage	V_N	$f = 10Hz$ to 100KHz $T_A = +25^\circ C$		40		μV
Ripple Rejection	RR	$f = 120Hz$, $I_O = -35V$ $\Delta V_I = 10V$	54	60		dB
Dropout Voltage	V_D	$T_J = +25^\circ C$ $I_O = 1A$		2		V
Short Circuit Current	I_{SC}	$T_J = +25^\circ C$, $V_I = -35V$		300		mA
Peak Current	I_{PK}	$T_J = +25^\circ C$		2.2		A

* Load and line regulation are specified at constant junction temperature. Changes in V_O due to heating effects must be taken into account separately. Pulse testing with low duty is used.

FAIRCHILD
SEMICONDUCTOR™

LM7912A ELECTRICAL CHARACTERISTICS

LM79XX/A (KA79XX, MC79XX) FIXED VOLTAGE REGULATOR (NEGATIVE)

($V_I = 18V$, $I_O = 500mA$, $0^\circ C \leq T_J \leq +125^\circ C$, $C_I = 2.2\mu F$, $C_O = 1\mu F$, unless otherwise specified.)

Characteristic	Symbol	Test Conditions	Min	Typ	Max	Unit
Output Voltage	V_O	$T_J = +25^\circ C$	-11.75	-12	-12.25	V
		$I_O = 5mA$ to 1A, $P_O = 15W$ $V_I = -15.5$ to $-27V$	-11.5	-12	-12.5	
Line Regulation	ΔV_O	$T_J = +25^\circ C$		12	240	mV
		$V_I = -14.5$ to $-30V$ $V_I = -16$ to $-22V$		6	120	
Load Regulation	ΔV_O	$T_J = +25^\circ C$ $I_O = 5mA$ to 1.5A		12	240	mV
		$T_J = +25^\circ C$ $I_O = 250$ to 750mA		4	120	
Quiescent Current	I_Q	$T_J = +25^\circ C$		3	6	mA
Quiescent Current Change	ΔI_Q	$I_O = 5mA$ to 1A		0.05	0.5	mA
		$V_I = -15$ to $-30V$		0.1	1	
Temperature Coefficient of V_O	$\Delta V_O/\Delta T$	$I_O = 5mA$		-0.8		mV/ $^\circ C$
Output Noise Voltage	V_N	$f = 10Hz$ to 100Khz $T_A = +25^\circ C$		200		μV
Ripple Rejection	RR	$f = 120Hz$ $\Delta V_I = 10V$	54	60		dB
Dropout Voltage	V_D	$T_J = +25^\circ C$ $I_O = 1A$		2		V
Short Circuit Current	I_{SC}	$T_J = +25^\circ C$, $V_I = -35V$		300		mA
Peak Current	I_{PK}	$T_J = +25^\circ C$		2.2		A

* Load and line regulation are specified at constant junction temperature. Changes in V_O due to heating effects must be taken into account separately. Pulse testing with low duty is used.

FAIRCHILD
SEMICONDUCTOR™

LM79XX/A (KA79XX, MC79XX) FIXED VOLTAGE REGULATOR (NEGATIVE)

($V_I = 23V$, $I_O = 500mA$, $0^\circ C \leq T_J \leq +125^\circ C$, $C_1 = 2.2\mu F$, $C_O = 1\mu F$, unless otherwise specified.)

Characteristic	Symbol	Test Conditions	Min	Typ	Max	Unit
Output Voltage	V_O	$T_J = +25^\circ C$	-14.7	-15	-15.3	V
		$I_O = 5mA$ to 1A, $P_O = 15W$ $V_I = -18$ to -30V	-14.4	-15	-15.6	
Line Regulation	ΔV_O	$T_J = +25^\circ C$	$V_I = -17.5$ to -30V	12	300	mV
			$V_I = -20$ to -26V	6	150	
Load Regulation	ΔV_O	$T_J = +25^\circ C$ $I_O = 5mA$ to 1.5A		12	300	mV
			$T_J = +25^\circ C$ $I_O = 250$ to 750mA		4	
Quiescent Current	I_Q	$T_J = +25^\circ C$		3	6	mA
Quiescent Current Change	ΔI_Q	$I_O = 5mA$ to 1A		0.05	0.5	mA
		$V_I = -18.5$ to -30V		0.1	1	
Temperature Coefficient of V_O	$\Delta V_O / \Delta T$	$I_O = 5mA$		-0.9		mV/ $^\circ C$
Output Noise Voltage	V_N	$f = 10Hz$ to 100KHz $T_A = +25^\circ C$		250		μV
Ripple Rejection	RR	$f = 120Hz$ $\Delta V_I = 10V$	54	60		dB
Dropout Voltage	V_D	$T_J = +25^\circ C$ $I_O = 1A$		2		V
Short Circuit Current	I_{SC}	$T_J = +25^\circ C$, $V_I = -35V$		300		mA
Peak Current	I_{PK}	$T_J = +25^\circ C$		2.2		A

* Load and line regulation are specified at constant junction temperature. Changes in V_O due to heating effects must be taken into account separately. Pulse testing with low duty is used.

FAIRCHILD
SEMICONDUCTOR™

TYPICAL PERFORMANCE CHARACTERISTICS

LM79XX/A (KA79XX, MC79XX) FIXED VOLTAGE REGULATOR (NEGATIVE)

Fig.1 Output Voltage

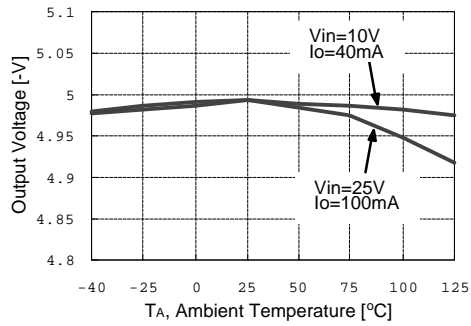


Fig. 2 Load Regulation

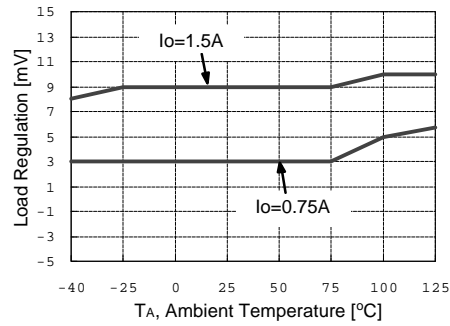


Fig.3 Quiescent Current

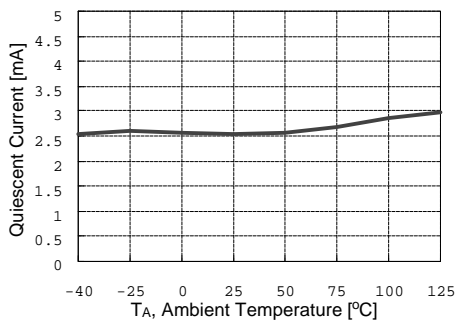


Fig. 4 Dropout Voltage

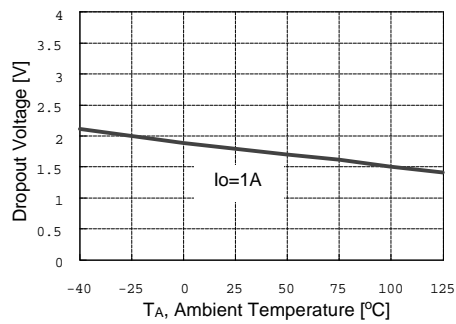
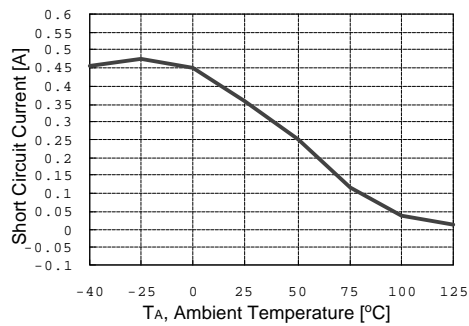
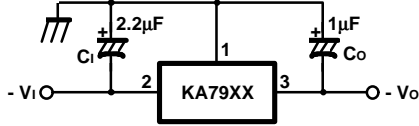


Fig.5 Short Circuit Current



LM79XX/A (KA79XX, MC79XX) FIXED VOLTAGE REGULATOR (NEGATIVE)

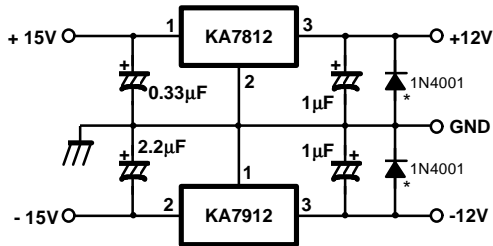
Fig. 6 Negative Fixed output regulator



Notes:

- (1) To specify an output voltage, substitute voltage value for "XX"
- (2) Required for stability. For value given, capacitor must be solid tantalum. If aluminum electrolytics are used, at least ten times value shown should be selected. C_1 is required if regulator is located an appreciable distance from power supply filter.
- (3) To improve transient response. If large capacitors are used, a high current diode from input to output (1N4001 or similar) should be introduced to protect the device from momentary input short circuit.

Fig. 7 Split power supply ($\pm 12V/1A$)



*: Against potential latch-up problems.

TRADEMARKS

The following are registered and unregistered trademarks Fairchild Semiconductor owns or is authorized to use and is not intended to be an exhaustive list of all such trademarks.

ACEx™	ISOPLANAR™
CoolFET™	MICROWIRE™
CROSSVOLT™	POP™
E ² CMOS™	PowerTrench™
FACT™	QS™
FACT Quiet Series™	Quiet Series™
FAST®	SuperSOT™-3
FASTr™	SuperSOT™-6
GTO™	SuperSOT™-8
HiSeC™	TinyLogic™

DISCLAIMER

FAIRCHILD SEMICONDUCTOR RESERVES THE RIGHT TO MAKE CHANGES WITHOUT FURTHER NOTICE TO ANY PRODUCTS HEREIN TO IMPROVE RELIABILITY, FUNCTION OR DESIGN. FAIRCHILD DOES NOT ASSUME ANY LIABILITY ARISING OUT OF THE APPLICATION OR USE OF ANY PRODUCT OR CIRCUIT DESCRIBED HEREIN; NEITHER DOES IT CONVEY ANY LICENSE UNDER ITS PATENT RIGHTS, NOR THE RIGHTS OF OTHERS.

LIFE SUPPORT POLICY

FAIRCHILD'S PRODUCTS ARE NOT AUTHORIZED FOR USE AS CRITICAL COMPONENTS IN LIFE SUPPORT DEVICES OR SYSTEMS WITHOUT THE EXPRESS WRITTEN APPROVAL OF FAIRCHILD SEMICONDUCTOR CORPORATION. As used herein:

1. Life support devices or systems are devices or systems which, (a) are intended for surgical implant into the body, or (b) support or sustain life, or (c) whose failure to perform when properly used in accordance with instructions for use provided in the labeling, can be reasonably expected to result in significant injury to the user.
2. A critical component is any component of a life support device or system whose failure to perform can be reasonably expected to cause the failure of the life support device or system, or to affect its safety or effectiveness.

PRODUCT STATUS DEFINITIONS

Definition of Terms

Datasheet Identification	Product Status	Definition
Advance Information	Formative or In Design	This datasheet contains the design specifications for product development. Specifications may change in any manner without notice.
Preliminary	First Production	This datasheet contains preliminary data, and supplementary data will be published at a later date. Fairchild Semiconductor reserves the right to make changes at any time without notice in order to improve design.
No Identification Needed	Full Production	This datasheet contains final specifications. Fairchild Semiconductor reserves the right to make changes at any time without notice in order to improve design.
Obsolete	Not In Production	This datasheet contains specifications on a product that has been discontinued by Fairchild semiconductor. The datasheet is printed for reference information only.